

A dosage system for dye.

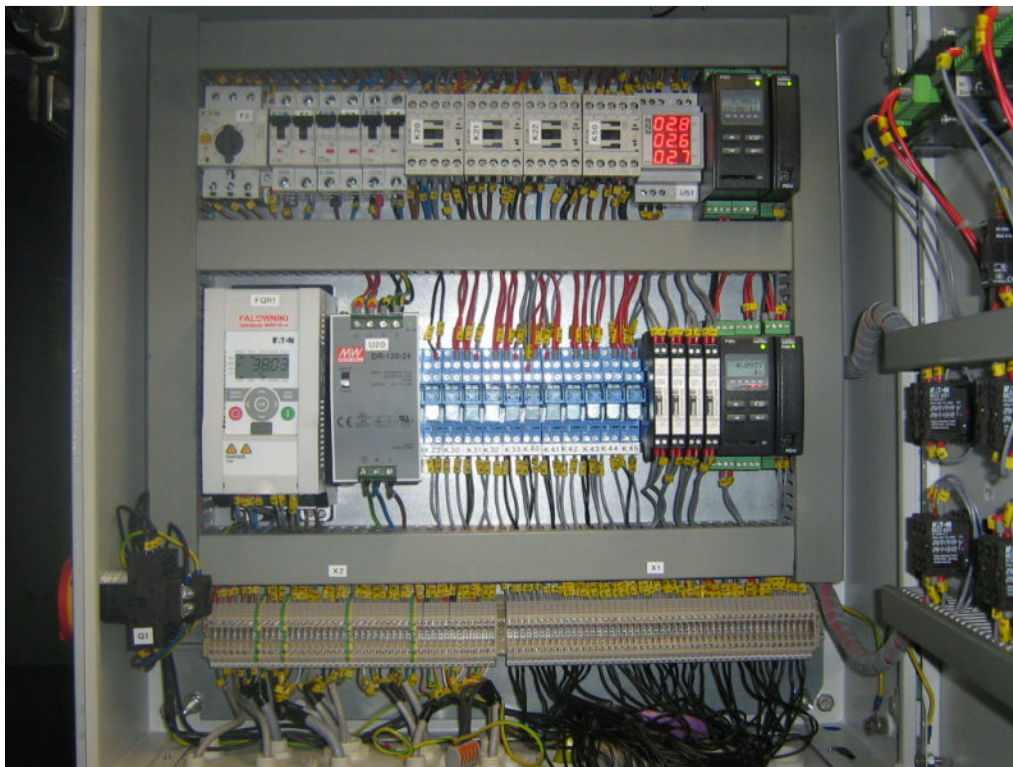


Picture 1. External view

The system controls the precise dosing of dyes. The dye is stored in a tank with an agitator. The liquid from the tank is fed by means of metering pumps into further part of the installation. The process can be controlled locally by control cabinet or externally by DCS system.

Key features:

- ✓ Control of two independent dosing tracks.
- ✓ Dual flow measurement in one track.
- ✓ Ultrasonic measurement of the level of dye in the storage tank.
- ✓ Agitator control in the storage tank.
- ✓ Possibility of local or remote control by DCS.



Picture 2. Internal view



Picture 3. Installed control panel