

A control system for valve positions.



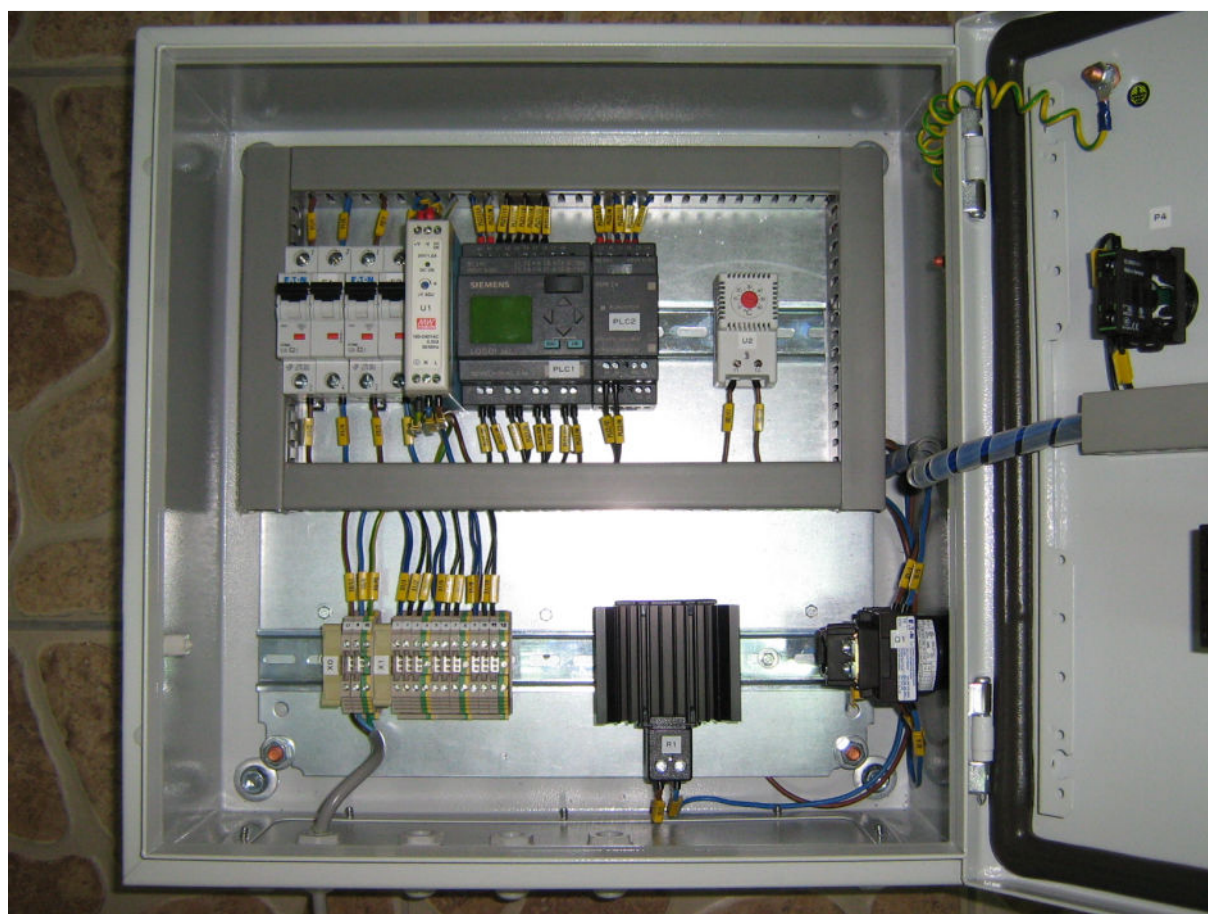
Picture 1. External view

The device secures the unloading of cistern trucks with hazardous substances. The installation consists of two control panels each for separate unloading collector. The first unloading collector includes three manual valves, second includes two manual valves. Each manual valve is equipped in open and close limit switches. Before unloading process an operator sets the throttles in the appropriate position. The system confirms the correct position of valves and it is ready to unload a cistern truck.

There is a Siemens Logo! PLC installed in the device.

Key features:

- ✓ Control the position up to three throttles.
- ✓ Signaling an incorrect position of the throttles and defective limit switches.
- ✓ The heating system protection against condensation.



Picture 2. Internal view



Zdjęcie 3. Control panels on unloading station.