

## A control panel for packaging



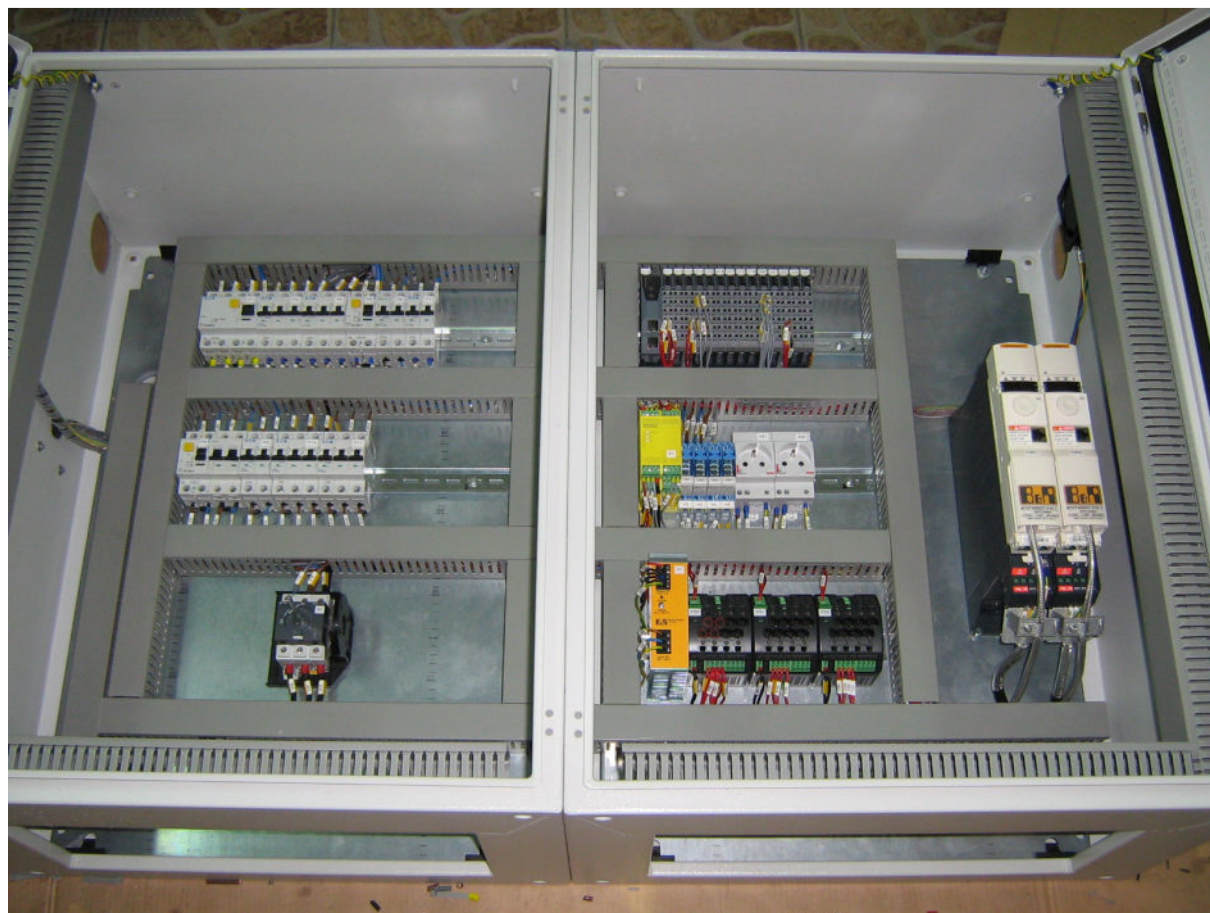
Picture 1. External view

The device is designed to control the operation of the packaging line in the pharmaceutical industry. The line consists of two belt conveyors, pneumatic actuators and a range of sensors.

The system includes B&R modules X20 series and variable frequency drives ACPI P74.

Key features:

- ✓ Belt conveyors control.
- ✓ Pneumatic actuators control.
- ✓ Alarms signaling.



Picture 2. Internal view