

## An industrial wastewater treatment station.



Picture 1. External view

The device has been designed to control the installation of wastewater generated during processing of metals. During the cleaning process wastewater is divided into a distillate that can be thrown in drains and oil fractions.

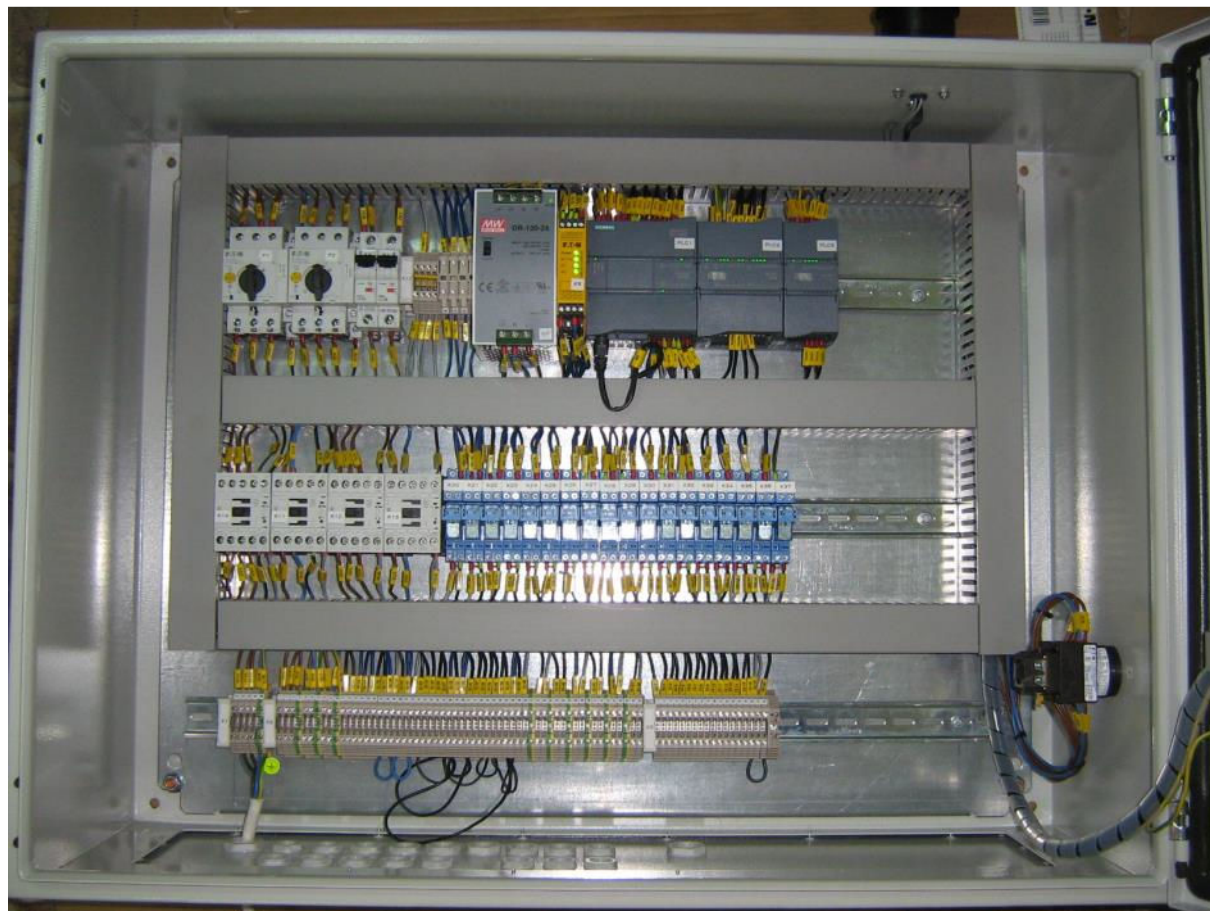
The system reads signals from the pH level sensors and the float and ultrasonic level sensors. The device controls the number of pumps and solenoid valves.

There are a Siemens PLC S7-1200 and Siemens KTP600 HMI installed in the system.

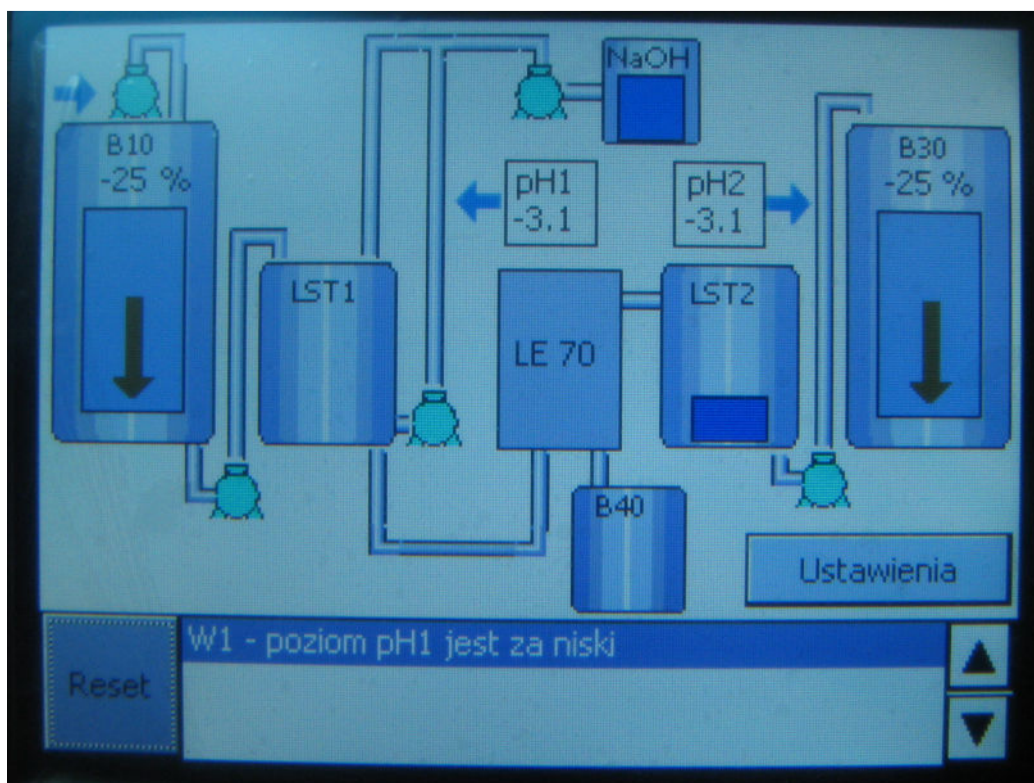
Key features:

- ✓ Maintaining an adequate level of media in the tanks of sewage treatment.
- ✓ pH level measurement.
- ✓ Sewage neutralization with inadequate pH level.
- ✓ Supervision of the leak and overflow sensors in the installation tanks.
- ✓ Retransmission of control signals into Destimat LE70 device.
- ✓ Process visualization on the HMI.

✓ Alarms signaling.



Picture 2. Internal view



Picture 3. Process visualization.



Picture 4. The supplied station for neutralization