

Drinking water treatment plant

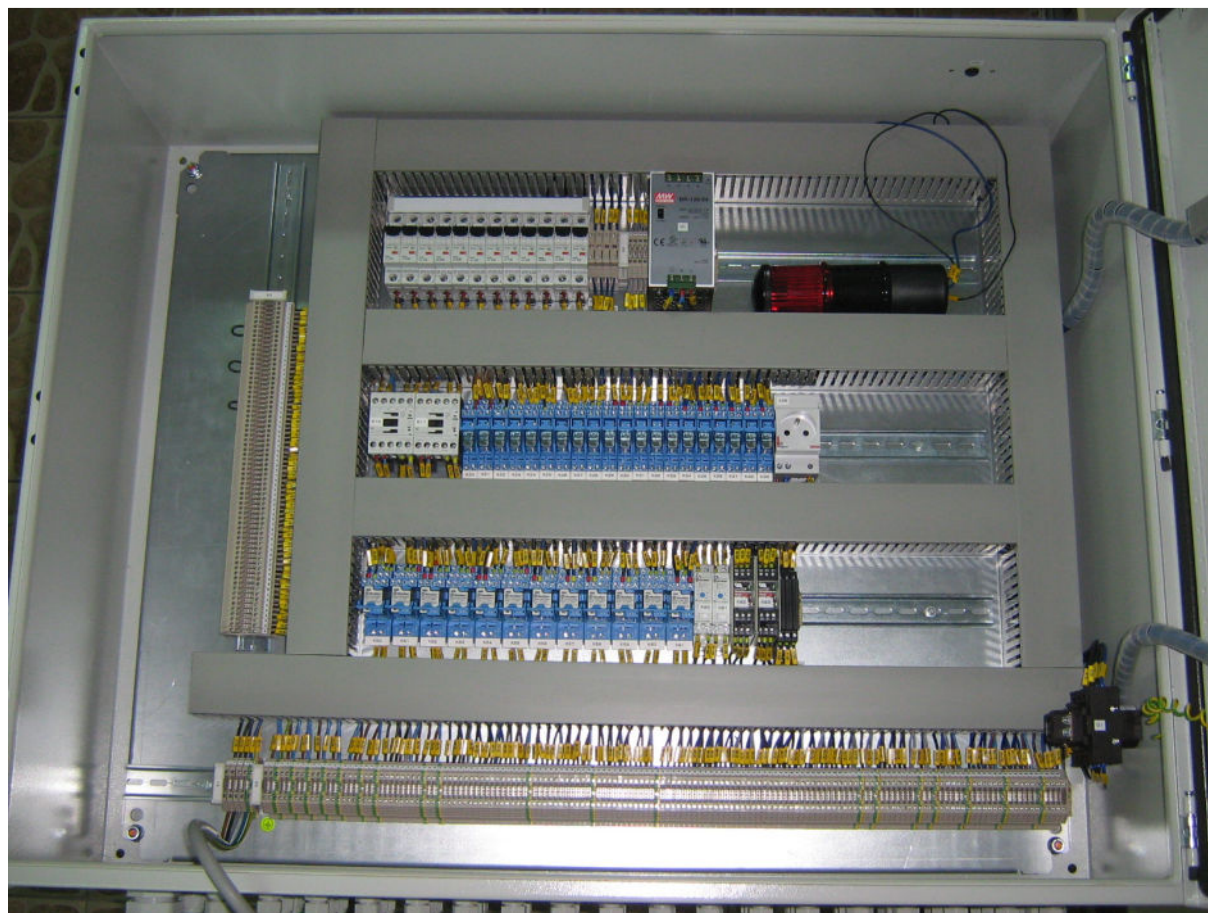


Picture 1. External view

The installation is designed for the treatment of drinking water flowing through the three pipelines (two with a diameter DN500 and DN600 with a diameter of one). The process principle is dosing of sodium hypochlorite in proportion to measured flow. The system monitors the status of the storage tanks and the process of filling.

Key features:

- ✓ Control of three metering pumps with variable output.
- ✓ Flow measurement in three pipelines.
- ✓ Pressure measurement in three pipelines.
- ✓ Measurement of chlorine concentration in three pipelines.
- ✓ Supervision of the leak and overflow sensors in the storage tanks.
- ✓ Loading pumps control.
- ✓ Alarms signaling.



Picture 2. Internal view



Picture 3. Control panels for filling the storage tanks.



Picture 4. Bottom plate with cable glands.